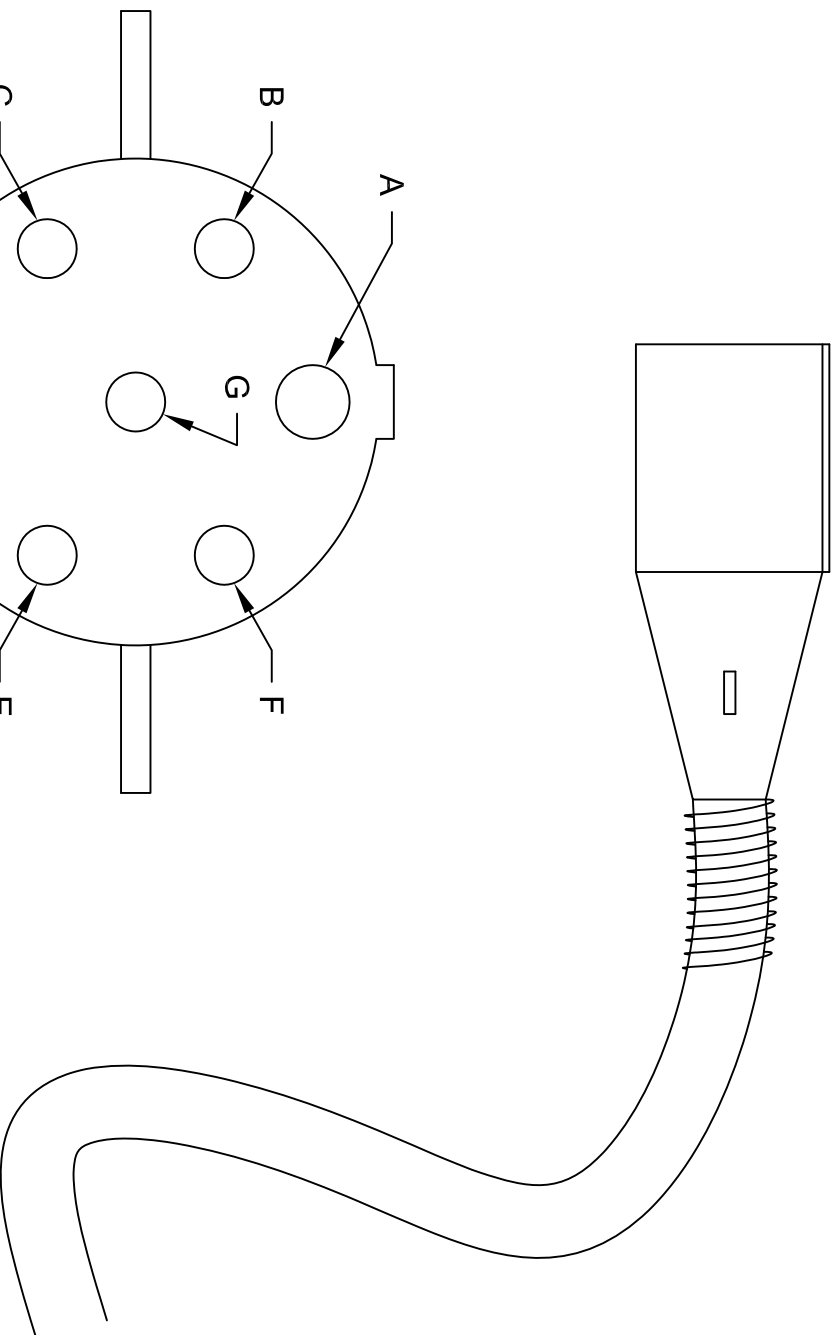


**NOTES:**

To extend 8ft. beyond pintle.

**WIRING NOTES:**

- A. WHITE: GROUND - 10
- B. BLACK: MARKER -12
- C. YELLOW: LEFT TURN & BRAKE - 12
- D. RED: STOP / BRAKE -12
- E. GREEN: RIGHT TURN & BRAKE - 12
- F. BROWN: TAIL - 12
- G. BLUE: ABS -12



**PA DEPARTMENT OF TRANSPORTATION**

**REVISIONS**

NO.	DATE	BY	DESCRIPTION
1	5-16-2018	KBD	ROUND PIN MALE CONNECTOR
2			
3			

**WIRING DIAGRAM / 7 WAY**

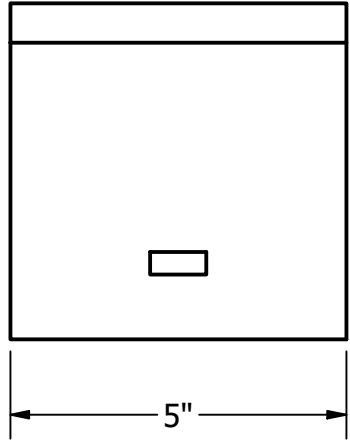
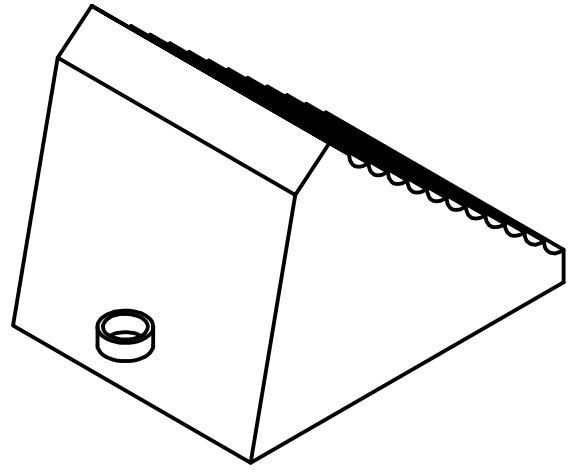
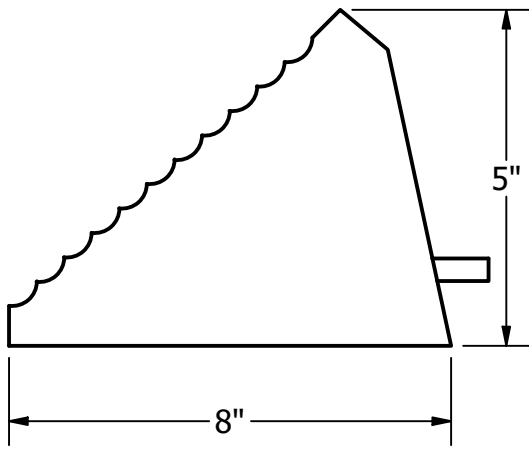
**ROUND PIN MALE CONNECTOR**

DRAWN BY	SCALE	EQN-80B
JJB	N/A	
DATE	CHKD BY	SHEET 1 OF 1
08-02-16		

2 1

B

B



**NOTES:**

- CHOCK HOLDERS SHALL BE ALUMINUM
- TWO CHOCKS PER TRUCK SHALL BE SUPPLIED
- EACH PAIR OF CHOCKS SHALL HAVE 4' OF 3/8" NYLON ROPE CONNECTING THE TWO CHOCKS TOGETHER

A

A

A

A

DRAWN	LWB	12/19/2022	PA DEPARTMENT OF TRANSPORTATION		
CHECKED			TITLE		
QA			<b>5" X 8" X 5" CHOCK AND HOLDER</b>		
MFG			SIZE	DWG NO	REV
APPROVED			<b>A</b>	<b>EQN-82A</b>	
			SCALE	1 / 4	SHEET 1 OF 1

2

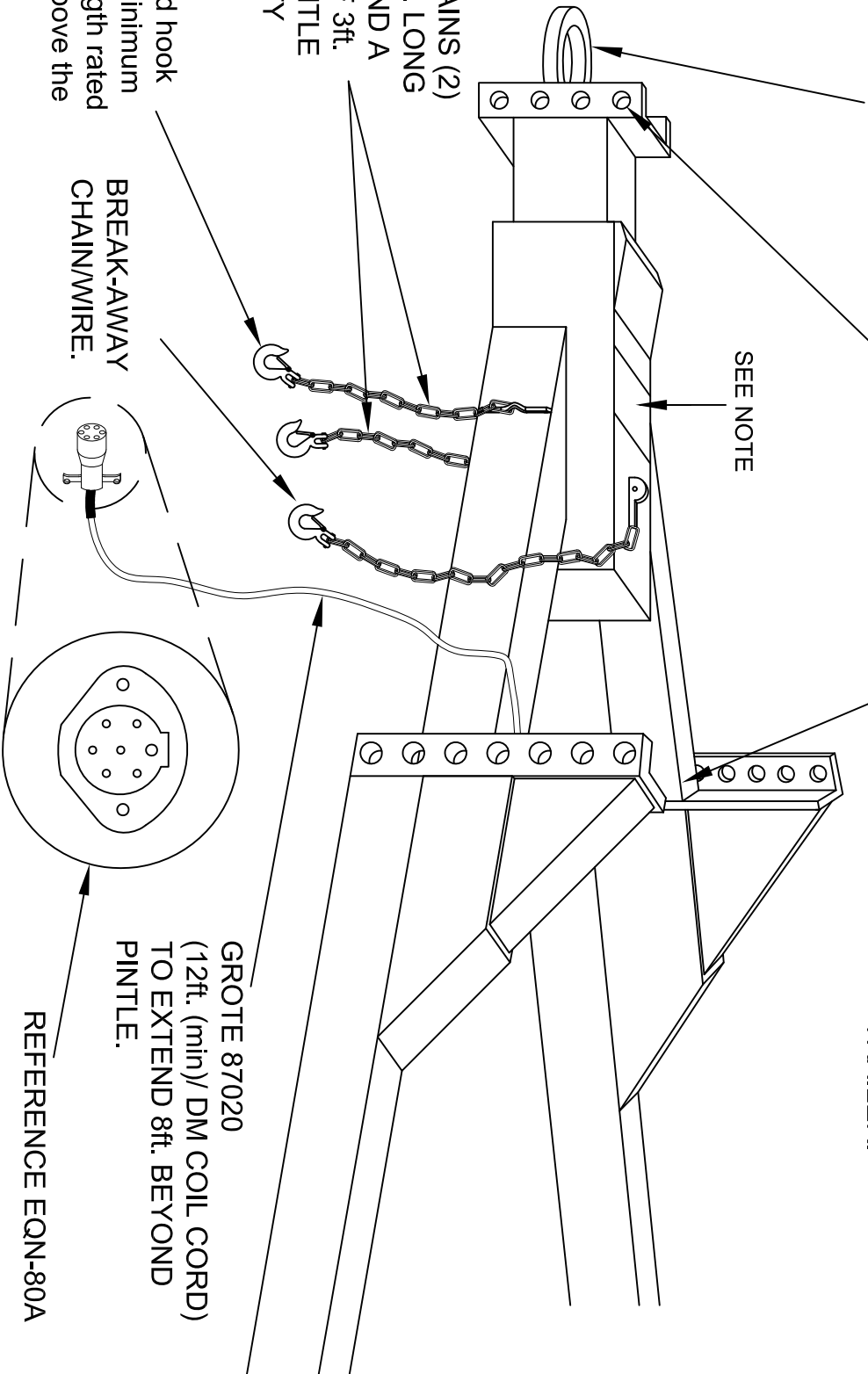
↑

1

SURGE-BRAKE ACTUATOR WITH 3in. LUNNETTE EYE. REF: DICO MODEL 20 OR DICO MODEL 10 OR EQUAL.

VARIABLE ADJUSTMENT BY COMBINATION OF ONE OR BOTH ADJUSTMENTS TO ALLOW 18in. TO 28in.

HEAVY DUTY (BOX CHANNEL PREFERABLE) DESIGN WITH MINIMUM CAPACITY NOT LESS THAN 10% MORE THAN TONGUE WEIGHT OF THE TRAILER.



Each chain and hook shall have a minimum breaking strength rated equal too or above the GVWR.

ANY ALTERNATE OR ADDITIONAL DESIGNS RECOMMENDED BY THE MANUFACTURER SHALL BE SUBMITTED, IN WRITING, TO THE FLEET MANAGEMENT DIVISION SPECIFICATION UNIT FOR APPROVAL. IF A PERMANENT HITCH MUST BE UTILIZED IT SHALL BE SET AT 28 INCHES.

**NOTE:** THERE SHALL BE A COLE HERSEE, HOLDER 11750 MOUNTED IN THE TONGUE AREA.

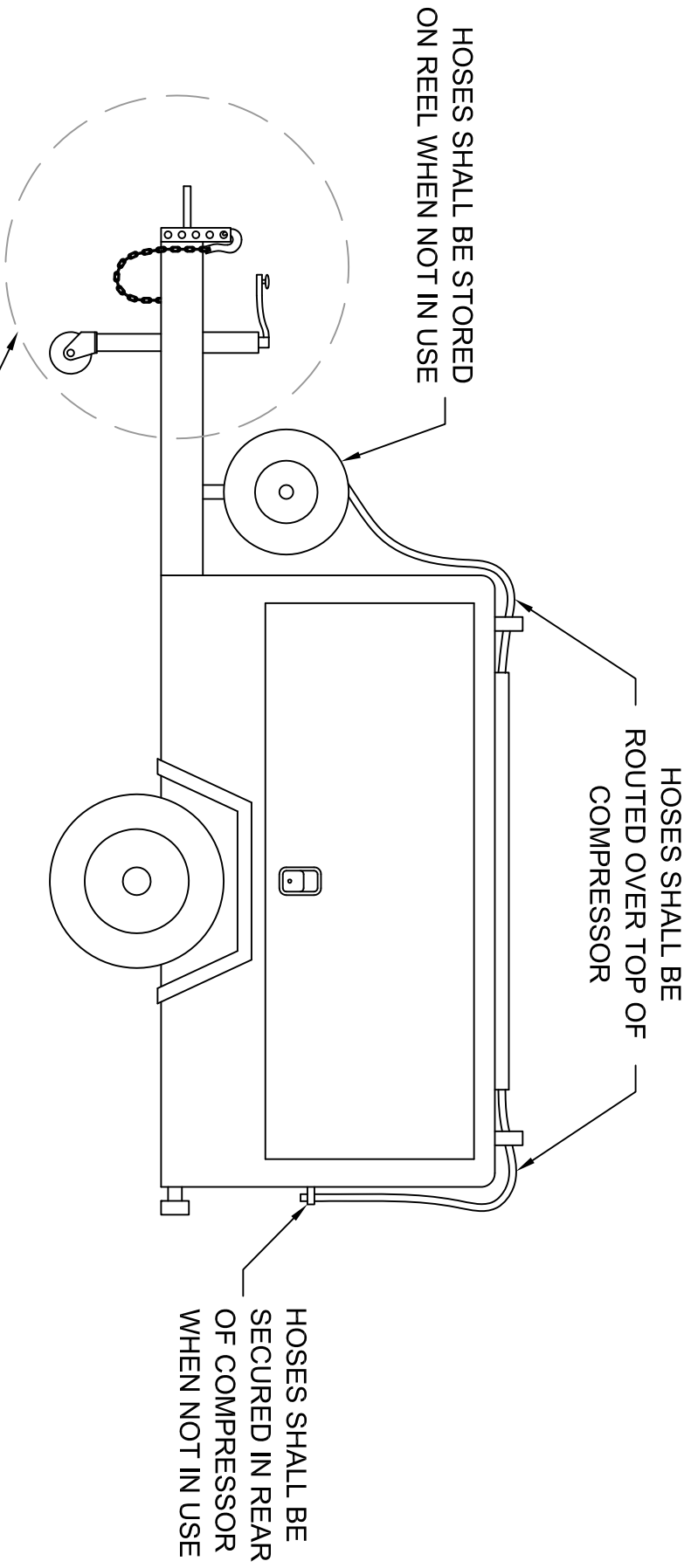
**PA DEPARTMENT OF TRANSPORTATION**

**REVISIONS**

NO.	DATE	BY	ACT	TRAILER, FRONT END SPECIFICATIONS
1	08-21-14	ACT		
2	07-22-15	JJB		
3	05-16-18	KBD		

**TRAILER, FRONT END SPECIFICATIONS**

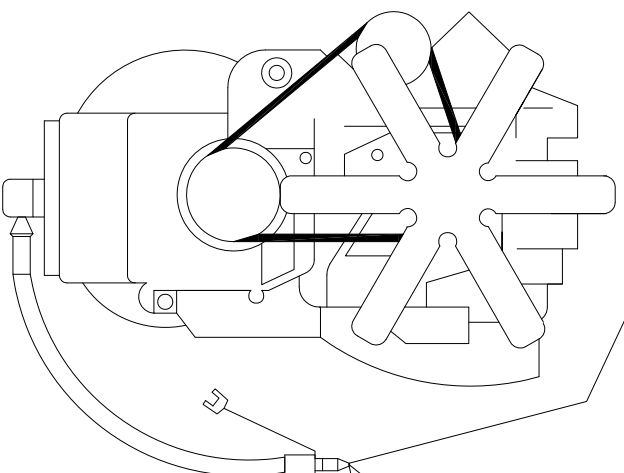
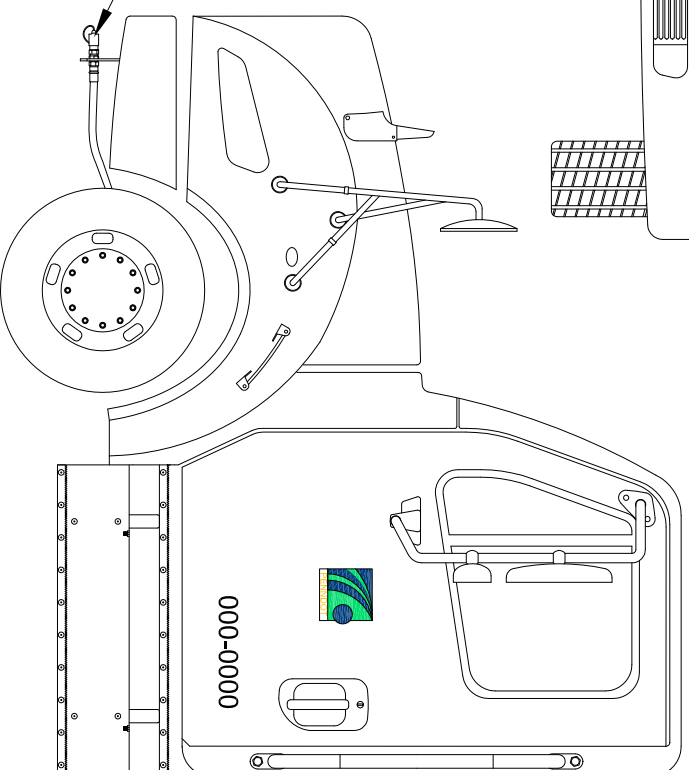
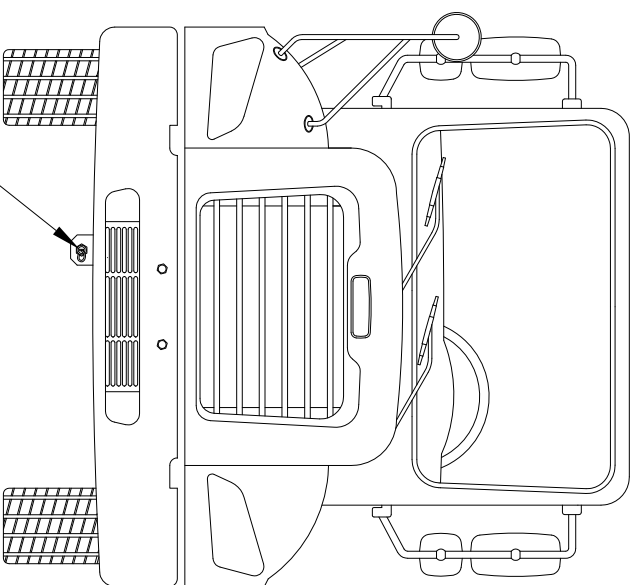
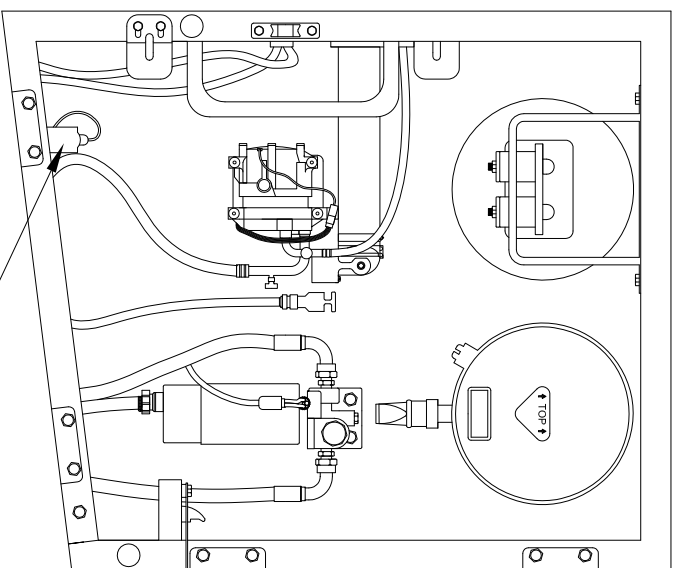
NO.	DATE	BY	ACT	TRAILER, FRONT END SPECIFICATIONS
1	08-21-14	ACT		
2	07-22-15	JJB		
3	05-16-18	KBD		



**PA DEPARTMENT OF TRANSPORTATION**

REVISIONS		AIR COMPRESSOR	
NO.	DATE	BY	
1			
2			
3			

DRAWN BY	JJB	SCALE	N/A	EQN-143
DATE	12-20-16	CHK'D BY		SHEET 1 OF 1



DISCONNECT  
COUPLING

FLOCS  
ENGINE KIT

**PA DEPARTMENT OF TRANSPORTATION**

**REVISIONS**

NO	DATE	BY
1	07-01-03	BLD
2	10-20-06	CJW
3	06-19-13	JFM

**FAST LUBE OIL CHANGE SYSTEM  
OVERVIEW AND PARTS LIST**

SCALE	DATE	CHK'D BY
N/A	08-22-97	WHM

000-0000



1. CONTACT AEROQUIP WITH YOUR DRAIN PAN PLUG SIZE
2. AEROQUIP DEALER TELEPHONE NUMBERS:

ADVANCED FLUID CONNECTORS..... 717-757-1068  
 AIR BRAKE & POWER EQUIPMENT CO.. 717-622-6188  
 AMERICAN BEARING & POWER..... 717-569-3291  
 GOODALL RUBBER COMPANY ..... 610-534-2100  
 POWER DRIVES INC..... 814-833-8181  
 R L MILLER INC..... 412-833-6800  
 R L MILLER INC..... 814-456-8900  
 SRG/BEVCO..... 610-358-3100  
 VOTO MANUFACTURERS SALES CO.... 814-226-7101

**FLOCS SHALL INCLUDE, BUT NOT LIMITED TO:**

- A. DUST CAP 5657-12
- B. HOSE TO SUIT LENGTH
- C. HOSE FITTING TO SUIT
- D. ADAPTER TO SUIT
- E. HOSE CLAMP #900729-6
- F. BRACKET TO SUIT
- G. COUPLING 5602-12-12S

**PA DEPARTMENT OF TRANSPORTATION**

REVISIONS			FAST LUBE OIL CHANGE SYSTEM OVERVIEW AND PARTS LIST		
NO	DATE	BY	SCALE	CHK'D BY	
1	07-01-03	BLD	DLW	N/A	EQN-351A
2	10-20-06	CJW			
3	06-19-13	JFM			